

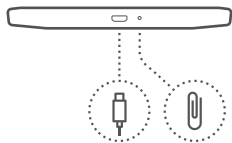
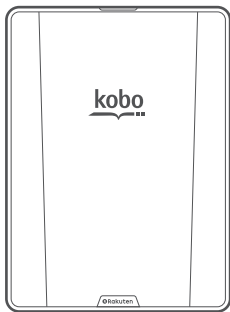
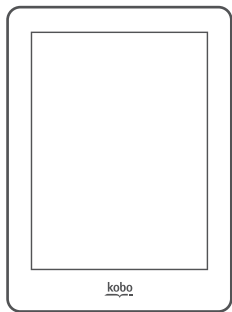
Jane Eyre

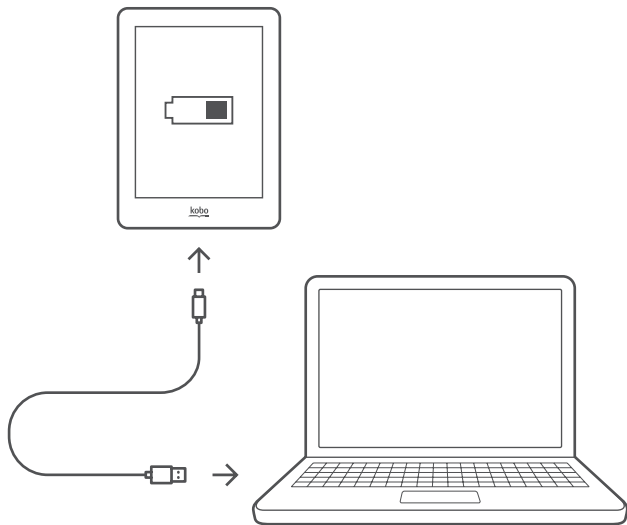
CHAPTER I

THERE WAS NO POSSIBILITY of taking a walk that day. We had been wandering, indeed, in the leafless shrubbery an hour in the morning; but since dinner (Mrs. Reed, when there was no company, dined early) the cold winter wind had brought with it clouds so sombre, and a rain so penetrating, that further outdoor exercise was now out of the question.

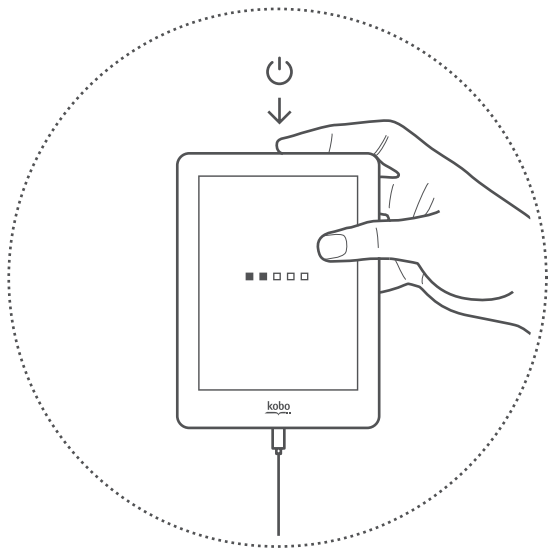
I was glad of it: I never liked long walks, especially on chilly afternoons: dreadful to me was the coming home in the raw twilight, with nipped fingers and toes, and a heart saddened by the chidings of Bessie, the nurse, and humbled by the consciousness of my physical inferiority to Eliza, John, and Georgiana Reed.

Chapter I - Page 1 of 13





- 1 Charge by connecting to your computer.
Chargez la liseuse en la connectant à l'ordinateur.
コンピュータに接続して充電してください。
Carica connettendo al computer.
Carregue o seu eReader ligando-o ao computador.
Carregue conectando ao seu computador.
Carga el lector conectándolo a un ordenador.
Laden Sie den eReader über die Computerverbindung.
Laad de eReader op met je computer.



2

Press and hold the power button to start.

Appuyez sur le bouton d'alimentation pour commencer.

電源ボタンを長押しします。

Tieni premuto il tasto di accensione per iniziare.

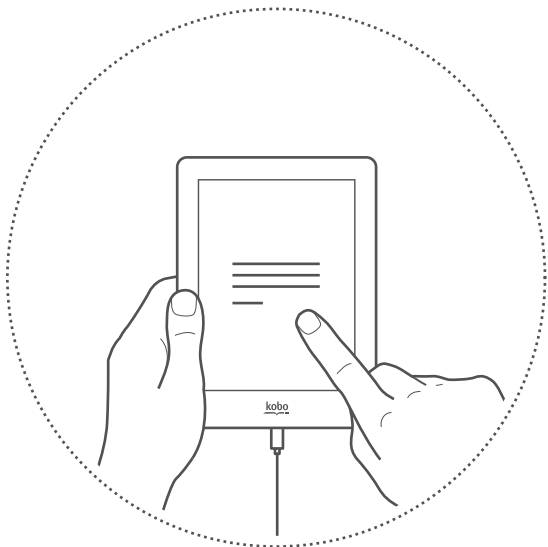
Mantén pulsado el botón de encendido para iniciar.

Prima sem largar o botão de ligar/desligar para ligar.

Para iniciar, mantenha o botão de ligar/desligar pressionado.

Halten Sie den An-/Ausschalter gedrückt, um zu beginnen.

Houd de aan/uit-knop ingedrukt om op te starten.



3

Follow the setup instructions on screen.

Suivez les instructions d'installation sur l'écran.

画面のセットアップ手順にしたがってください。

Segui le istruzioni.

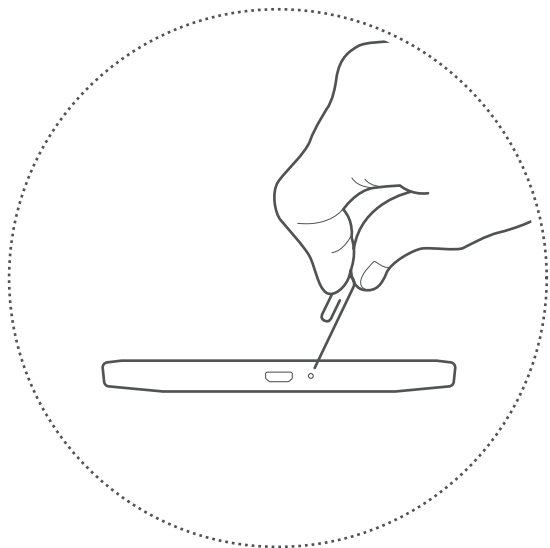
Siga as instruções no ecrã para configurar.

Siga as instruções de configuração na tela.

Sigue las instrucciones de configuración.

Folgen Sie der Setup-Anleitung auf dem Bildschirm.

Volg de instructies op het scherm.



To reset your eReader, insert a paper clip.

Insérez un trombone pour réinitialiser votre liseuse.

リセットするには、ピン等でピンホールのリセットボタンを押してください。

Per eseguire il reset dell'eReader usare una graffetta.

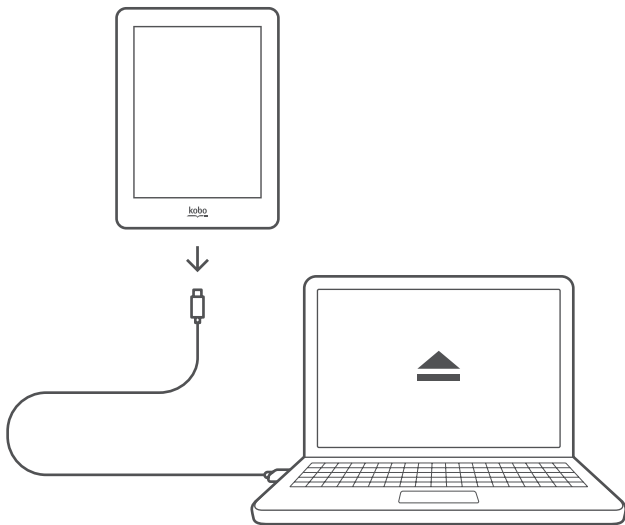
Para restaurar o seu eReader, insira um clipe.

Para reiniciar o seu eReader, insira um clipe de papel.

Para reiniciar tu eReader, inserta un clip.

Büroklammer einstecken für ein Reset Ihres eReaders.

Voer een paperclip in om uw eReader te resetten.



Eject your eReader before unplugging the USB cable.

Éjecter votre liseuse avant de débrancher le câble USB.

ケーブルを抜く前に PC 接続を解除してください。

Espelli l'eReader prima di scollegare il cavo USB.

Expulsa el lector antes de desenchufar el cable USB.

Remova o seu eReader antes de desligar o cabo USB da tomada.

Remova o seu eReader antes de desligar o cabo USB.

Werfen Sie den eReader aus, bevor Sie die USB-Verbindung trennen.

Werp de eReader uit voor je kabel losmaakt.



kobo.com/help